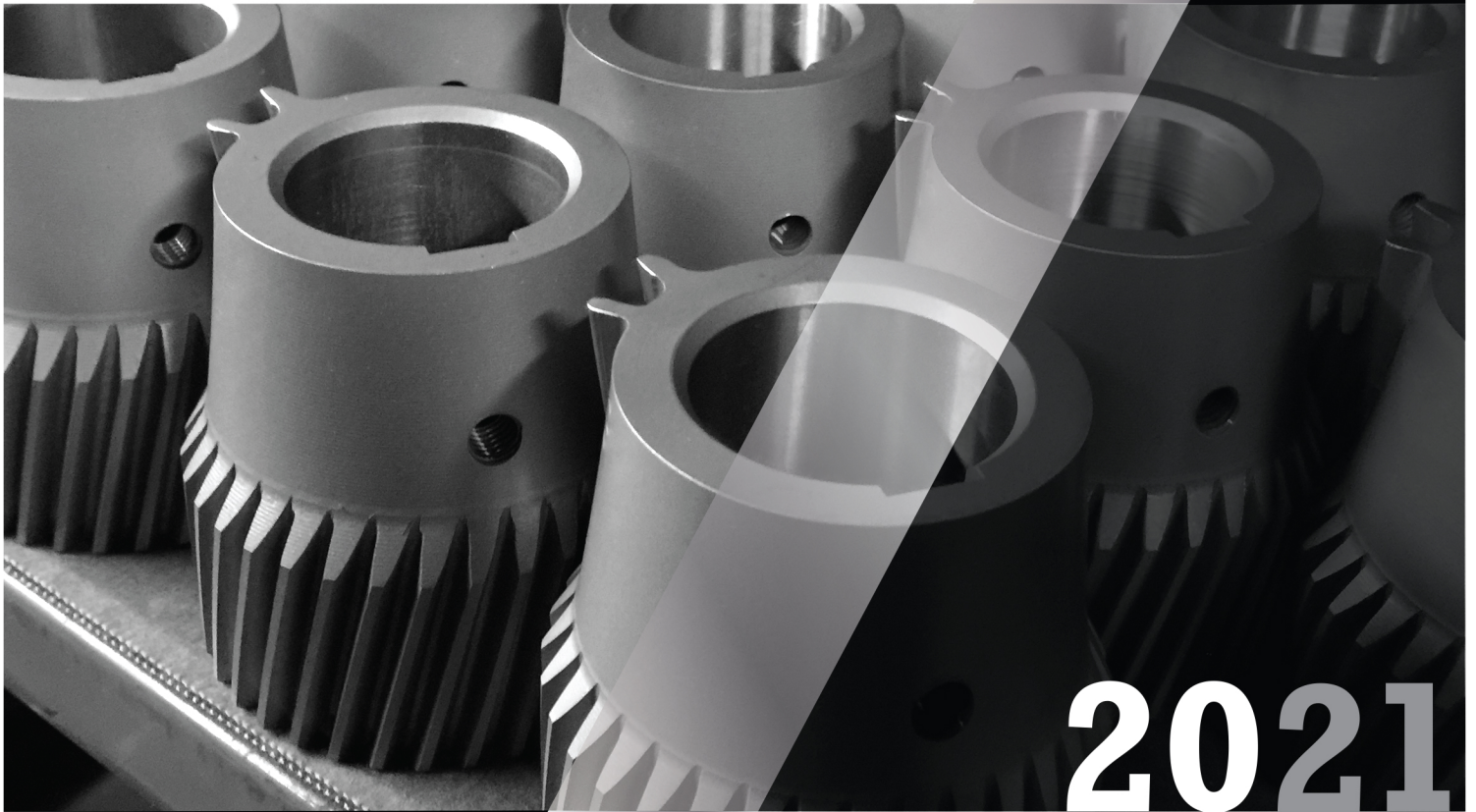




CRI
MACHINING, INC.

A GENERAL CONTRACTING
MACHINE SHOP

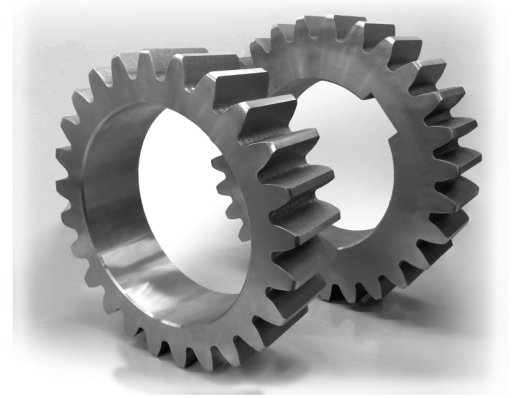


2021

PROTOTYPE TO OEM
PART MANUFACTURING

WHO ARE WE?

CRI Machining is a full service machine shop with CNC machining, fabrication capabilities, heat treat capabilities and conventional machining. Our facility and staff are equipped to produce high quality precision parts from one prototype to production. We are **ISO 9001-2015** certified.



SERVICES

Milling
Turning
5 Axis High Speed Milling & Turning
EDM
Welding
CMM
CAD/CAM - Solid Works

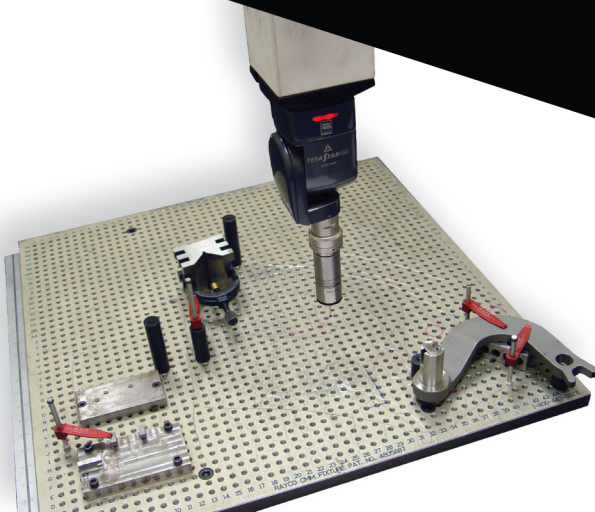


INDUSTRIES

Textile
Paper
Printing
Poultry
Lumber
Drilling Oil/Water
Government
Steel Mills
Mining
Specialty Manufacturing



OEM
Prototype
Speciality Orders



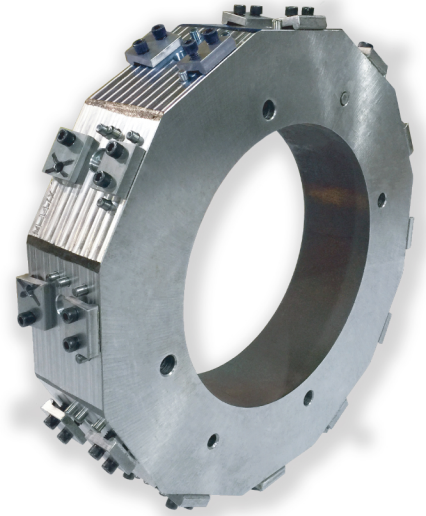
QUALITY CONTROL

CMMSheffield Endeavor +
120mmX200mmX100mm measuring range. Renishaw controller and articulating scanning head.

CAPABILITIES



Machine	Qty.	Specifications
INSPECTION		
CMM Sheffield	1	48" x 96" x 36" Table
Mahr Digimar 817 CLM	1	Measuring range up to 350mm
Keyence IM-7000 Optical Comparator	1	20 lb. weight limit, 300mm x 200mm Stage
PLATE CUTTING		
Laser - Mitsubishi	1	3500 Watt 48" x 98" with Pallet Changer
Laser - Mitsubishi	1	4500 Watt 60" x 120" with Pallet Changer
Water Jet - Ward	1	5 Axis with 12' x 16' Bed, Dual Heads
CNC LATHES		
Tolerances +/- .0003		
DMG Mori-Seike NLX 4000/750	1	24" Max Turning Diameter
Mori Seike SL403	1	24" Max Turning Diameter
Mori Seike NL3000	1	16" Max Turning Diameter
Mori Seike NL2500	1	12" Max Turning Diameter
Mori Seike NLXSY 2500/700	2	Live Tooling with Dual Spindles
Mori Seike NLXMC 2500/700	2	Live Tooling
Mori Seike NLX 3000/700	1	Live Tooling, Y Axis, Tail Stock, Cut Up to 16" Diameter
Okuma & Howa V80	1	40" Max Turning Diameter
Okuma & Howa ACT 35	1	15" Max Turning Diameter
Okuma & Howa ACT 4	1	16" Max Turning Diameter
MILLING		
Tolerances +/- .0002		
DMG Mori-Seike CMX 1100 Vertical	1	22" x 55" Table
Mori Seike 1100 Verticals	3	20" x 40" Table
Mori Seike 5100 Dura Verticals	2	20" x 40" Table
Mori Seike 5100 Dura Verticals	2	20" x 40" Table (with DDRT Rotaries)
Okuma & Howa 415 Verticals	3	16" x 22" Table
Okuma & Howa 415 Verticals	1	20" x 40" Table
Okuma & Howa 852 Verticals	2	33" x 80" Table
Okuma & Howa 414 Horizontal	1	16" x 27" Table
Okuma MB-5000H	1	6 Pallet Pull System, 140-Piece Matrix, Rotary Table 29.92 x 29.92 x 29.92
EDM		
Agie Charmilles 30P	1	23.6" x 15.7" x 12.78"
GEAR HOB		
Mitsubishi GB100	1	Max Diameter 40"
GRINDING		
Tolerances +/- .0004		
Blanchard Grinders	4	
Surface Grinder	1	16" x 40"
HEAT TREAT		
Tolerances +/- .010		
BeaverMatic Oven	1	Thru Hardening & Carburizing
PRESS BRAKE		
Press Brake	1	10-foot x 14 gage
MANUAL MACHINES		
Vertical Knee Mills	4	
Engine Lathes	3	
Keyseaters	2	



**CRI
MACHINING, INC.**



128 Industrial Blvd.
Blairsville, GA 30512



ph: 706.745.9599
fax: 706.745.9591



crimachining.com



sales@crimachining.com